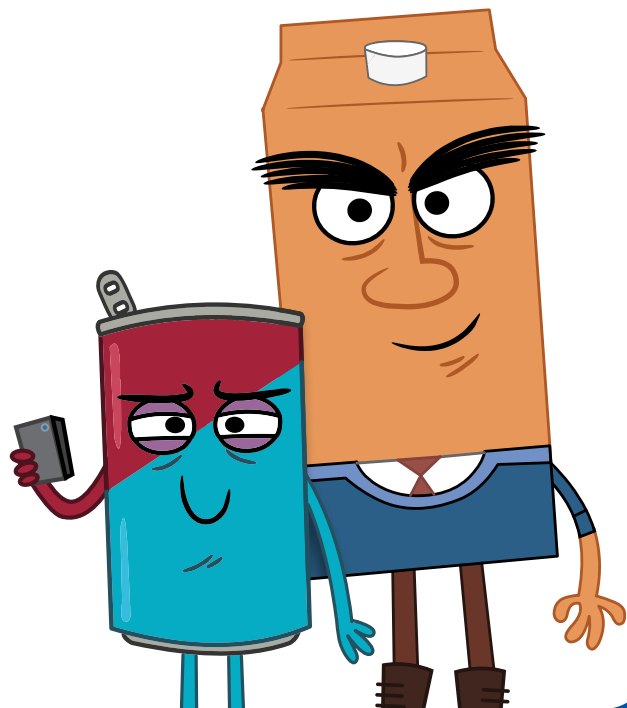


**REGISTER TODAY  
FOR A FREE EXPRESS  
ACCOUNT!**

[return-it.ca/express](https://return-it.ca/express)



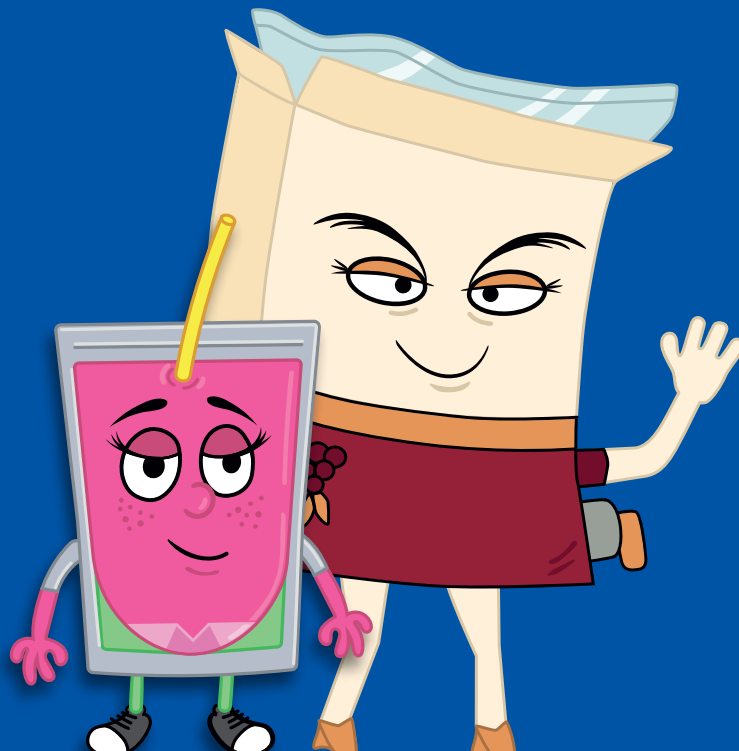
**FIND A LOCATION NEARBY AT:  
RETURN-IT.CA/EXPRESS**

**THERE IS A RETURN-IT EXPRESS NEAR YOU!**

The closest location is less than 3 km away from the address this brochure was delivered to by Canada Post.

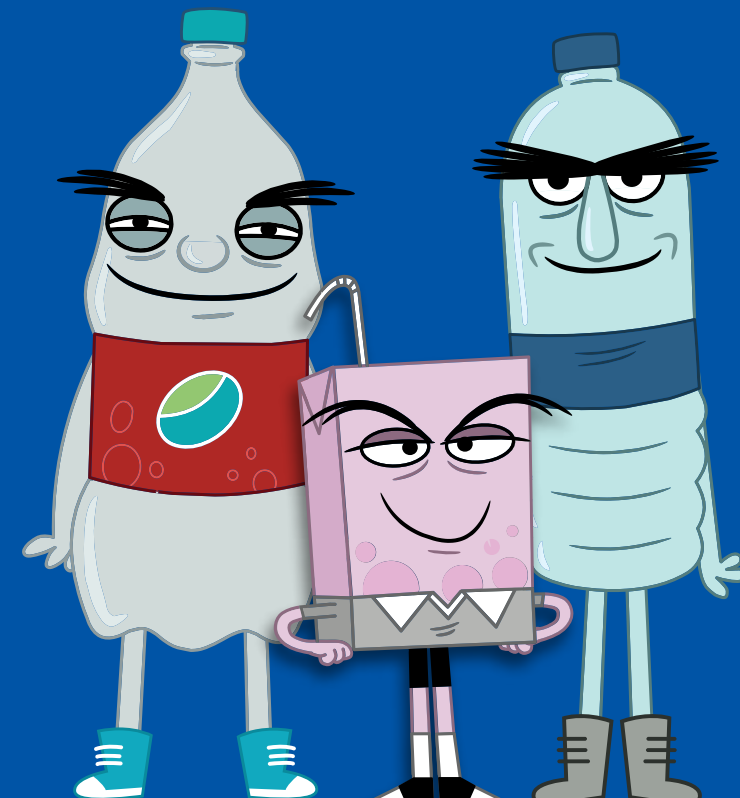
**NEED MORE HELP?**

Email us at [customerservice@returnit.ca](mailto:customerservice@returnit.ca), call us toll-free at 1-855-350-2345, or visit <https://support.return-it.ca/portal/en/home>.



**THE FASTER, EASIER  
WAY TO RETURN YOUR  
DRINK CONTAINERS.**

**NO SORTING, NO LINE-UPS,  
NO HANDLING CASH!**



## EXPRESS IS EASY

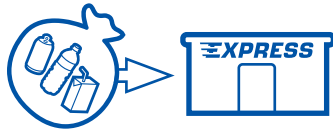
1

To get started, sign up for your free account at [return-it.ca/signup](https://return-it.ca/signup)



2

Bring your unsorted containers in clear plastic bags to an Express Depot or an Express & Go station.



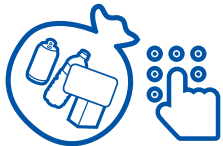
3

At the label stand, log in, print your bag labels and tag your bag. Each bag needs a label and you can print extra labels for future use.



4

Drop off the bag at the Express depot or if you're visiting an Express & Go station, use your pin code to open the bag drop door and drop your bags in.



5

We'll sort and count your containers and refund the deposit to your online account.



## ACCEPTED CONTAINER TYPES



Plastic



Drink Box

Bag-in-a-Box

Pouches



Gable Top

Aluminum



Bi-Metal

Glass



For more info on deposit amounts for each container type, visit [return-it.ca/refunds](https://return-it.ca/refunds)

Some milk and plant-based beverages not included such as infant formula, meal replacements, concentrates, and products like whipping cream and drinkable yogurt.

## IT PAYS TO RECYCLE



After you make a return, we'll count your containers and credit your Express account within 10 business days. Then you can transfer your deposit refunds instantly into your bank account through Interac e-Transfer. For maximum transfer amounts and all other details, visit [return-it.ca/express](https://return-it.ca/express)

## EXPRESS TIPS

### NO SORTING REQUIRED

Simply bring your labelled bags filled with unsorted containers to an Express Depot and we'll do the rest.



### BAG CONTAINERS IN CLEAR BAGS

Transparent recycling bags or clear trash bags are available for purchase at many grocery stores, drug stores, or hardware stores.



### FIND YOUR PIN ONLINE

If you're visiting an Express & GO unstaffed station, you'll need your unique PIN code to open the door. Find it in the "Profile" section of your dashboard.



### USE MULTIPLE BAGS

Heavy bags can break open and are difficult to handle. We recommend mixing in no more than 12 glass bottles along with your other containers in each Express bag.

